

- ORV Trail/Route
- Bicycle Trail
- Hiking/Walking Trail
- Equestrian Trail
- Snowshoe Trail
- Scenic Byway
- Golf Course
- Disc Golf Course
- Dirt Bike Trail/Route
- Snowmobile Trail
- Cross-Country Ski Trail
- Mountain Bike Trail
- Inline Trail
- Airport
- Dog Park
- Skate Park

**NELSON'S**  
Oil & Gas, Inc.  
PROPANE & FUEL OIL DELIVERY  
LP Gas • Fuel Oil • Diesel • Gasoline

1346 Galveston Ave.  
Hot Springs, SD 57747  
605-745-4189

109 2nd Street  
Edgemont, SD 57735  
605-662-7500

831 Mt Rushmore Rd.  
Custer, SD 57730  
605-673-4371

23909 Hwy 385  
Hill City, SD 57745  
605-574-4303

770 W Main Street  
Hermosa, SD 57744  
605-255-4544

nelsonsoilandgas.com

**STOP IN & CHECK OUT OUR HUGE SELECTION OF IN-STOCK FLOORING.**

Thousands of square feet of Luxury Vinyl Plank

Thousands of yards of Carpet

**CARPET BUYERS OUTLET**

4425 E. Colorado Blvd. | Spearfish, SD 57783  
605-644-1665

**Your Hometown Home Improvement Store!**

- Plumbing
- Electrical
- Household
- Outdoor Grilling
- Camping Supplies
- Milwaukee Tools
- Valspar Paints
- DeWalt Tools
- Pet Supplies
- Key Cutting

**NEWELL HARDWARE & SUPPLY**  
320 Girard, Newell, SD • 605.456.2313  
YOU'RE MORE THAN A CUSTOMER. YOU'RE A NEIGHBOR.

**WE LIKE THE TOUGH JOBS**

19730 Red Hill Rd., Spearfish  
605-642-5760 | Fisherind.com

**The State Museum & Visitor Center**  
... AT THE CENTER OF THE NATION

This is where your western adventure begins!  
Our picturesque complex includes a museum full of western, pioneer and natural history exhibits, plus hands-on activities for the kids: the historic Johnny Spaulding Cabin, and the magnificent granite Center of the Nation monument and Avenue of State flags. We're located in the little town where the west begins: Belle Fourche!  
Our Visitor Center includes maps and traveler information, too!

**FREE ADMISSION**  
Autumn-Winter hours: Tuesday-Saturday 9 to 5  
Summer hours: Monday-Saturday 9 to 5; Sunday 1 to 4  
415 Fifth Avenue, Belle Fourche S.D.  
www.thestatemuseum.com • 605-723-2010 or 605-723-1200

**BUGLIN' BULL RESTAURANT & SPORTS BAR**  
511 Mt. Rushmore Rd. • Custer SD 57730  
605-673-4477

Family friendly restaurant & sports bar. Outdoor seating on upper deck.

We offer a full menu with a wide variety of dishes!  
Delicious Burgers & Sandwiches • Steaks • Seafood • Soups & Salads

Catch your team in action in our sports bar, or enjoy a great meal in our restaurant featuring a full bar & an excellent selection of wines, microbrews & cocktails

GO TO [www.bellefourchelivestock.com](http://www.bellefourchelivestock.com) FOR OUR AUCTION SCHEDULE & SPECIAL SALE DATES  
(605) 892-2655 (800) 894-8684

**Belle Fourche Livestock Market**

SERVING THE TRI-STATE AREA SINCE 1935

**RUSHMORE STEEL ROOFING**

Tired Of Re-Roofing Your House? Try a Steel Roof!

Call Vernon 605-277-8870  
Do It Once, Do It Right!

CALL TODAY FOR YOUR FREE ESTIMATE

**56th ANNUAL Red Cloud Indian ART SHOW**  
June 1 - August 11, 2024

**dakotabusservice.com**  
**mydakotatrailways.com**

Dakota Bus Service Inc. is looking for both experienced and new drivers in the Spearfish, Rapid City and Gillette, WY areas. Dakota Bus Service Inc. will train new candidates that meet minimum hiring requirements.  
Contact 605-642-2353

**Free LOCAL AREA Map WITH RECREATIONAL TRAILS**  
**Black Hills, SD**

LincolnMarketing

**CBH CO-OP**  
Always Running

**HOT STUFF PIZZA**

**CHAMPS Chicken**  
(Hot Stuff Pizza & Champs Chicken not available at all locations)

cbhcoop.com

**Belle Fourche Travel Center**  
18765 US 85  
Belle Fourche, SD  
605-723-9000

**Belle Fourche C-Store**  
2311 5th Ave  
Belle Fourche, SD  
605-892-2661

**Sturgis C-Store**  
2020 Main St  
Sturgis, SD  
605-720-0193

**Elkhorn Ridge Travel Center**  
6764 E Colorado Blvd  
Spearfish, SD  
605-717-6960

**HWY 83, SD/NE BORDER**  
**EXPERIENCE THE THRILL!**

ROSEBUD CASINO

**ROSEBUD CASINO**

**BUFFET • BINGO • BLACK JACK • BAR**  
**DELI • RV PARK • ENTERTAINMENT**

SD/NE State Line on Highway 83 • [www.rosebudcasino.com](http://www.rosebudcasino.com)  
Rosebud Casino (800) 786-7673 • Quality Inn (605) 378-3360

Scan QR Code to go to the individual County Page

Lawrence County

Meade County

This free publication is made possible by the advertisers and other local agencies and may not be reproduced. Please support the local advertisers on this publication. Comments and/or suggestions may be directed to: [info@lincolnmktg.com](mailto:info@lincolnmktg.com)

This map is prepared with information provided to us by others, therefore, Lincoln Marketing and the advertisers assume no liability in regards to trails (including accuracy). Please respect private property and no trespassing signs. Stay on trails. Exercise extreme caution on all lakes and streams. Obey all state and local laws and ordinances. Do not operate snowmobiles on county roads or state highways. Posted signs on the trails override the printed map trails.

View this publication online at [www.lincolnmktg.com](http://www.lincolnmktg.com)

**holiday**  
by ATRIA  
SENIOR LIVING

HOLIDAY HILLS ESTATES  
2620 Holiday Ln. • Rapid City, SD  
605-348-4999  
[www.holidayseniorliving.com](http://www.holidayseniorliving.com)  
Mon. - Sun. 7:30am - 7:30pm

**FREEMAN'S ELECTRIC SERVICE INC.**  
Your Call, Our Command!

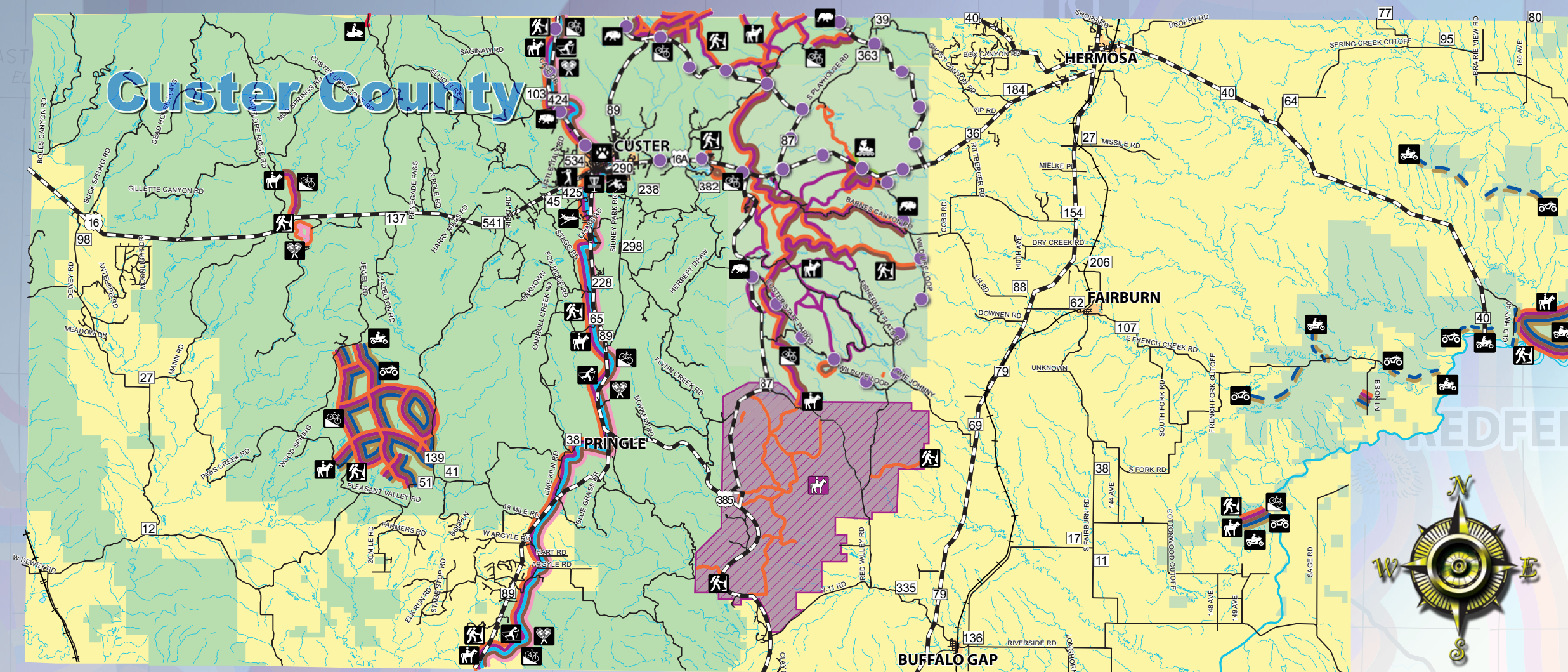
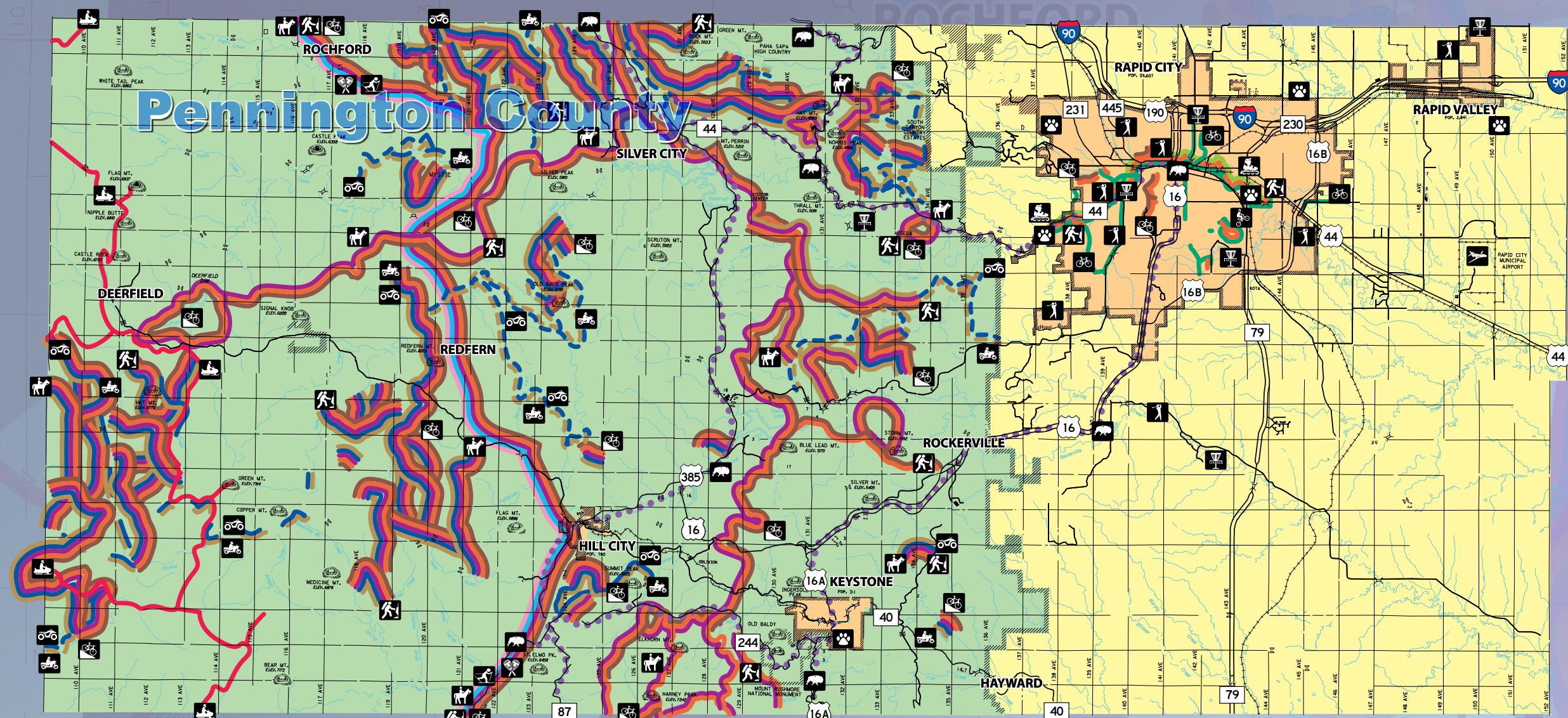
- Residential
- Commercial
- Service Calls
- Rural wiring
- Maintenance
- Repair
- Cove & baseboard heating systems
- Free estimates given

Looking for a unique job opportunity? We're always looking for journeymen and apprentices, so visit us!

748 Mt. Rushmore Rd.  
Custer, SD  
605-673-3701

steves@fremanselectric.com  
[www.fremanselectric.com](http://www.fremanselectric.com)

**CRAZY HORSE MEMORIAL**  
Open Year-Round! [CrazyHorseNational.org](http://CrazyHorseNational.org)



- Snowshoe Trail
- Inline Trail
- Scenic Byway
- Airport
- Dog Park
- Disc Golf Course
- BMX Park
- Skate Park
- ORV Trail/Route
- Dirt Bike Trail/Route
- Bicycle Trail
- Snowmobile Trail
- Hiking/Walking Trail
- Cross-Country Ski Trail
- Mountain Bike Trail
- Equestrian Trail
- Equestrian Area

Scan QR Code to go to the individual County Page

Custer County

Pennington County

This free publication is made possible by the advertisers and other local agencies and may not be reproduced. Please support the local advertisers on this publication. Comments and/or suggestions may be directed to: info@lincolnmktg.com

This map is prepared with information provided to us by others, therefore, Lincoln Marketing and the advertisers assume no liability in regards to trails (including accuracy). Please respect private property and no trespassing signs. Stay on trails. Exercise extreme caution on all lakes and streams. Obey all state and local laws and ordinances. Do not operate snowmobiles on county roads or state highways. Posted signs on the trails override the printed map trails.

View this publication online at [www.lincolnmktg.com](http://www.lincolnmktg.com)

**WE LIKE THE TOUGH JOBS**

**Fisher Industries**  
19730 Red Hill Rd., Spearfish  
605-642-5760 | Fisherind.com

**FREEMAN'S ELECTRIC SERVICE INC.**  
Your Call, Our Command!

- Residential • Rural wiring • Cove & baseboard heating systems
- Commercial • Maintenance
- Service Calls • Repair • Free estimates given

Looking for a unique job opportunity? We're always looking for journeymen and apprentices, so visit us!

748 Mt. Rushmore Rd. Custer, SD  
605-673-3701 | [www.freemanelectricinc.com](http://www.freemanelectricinc.com)

**holiday** by ATRIA  
SENIOR LIVING

HOLIDAY HILLS ESTATES  
2620 Holiday Ln. • Rapid City, SD  
605-348-4999  
[www.holidayseniorliving.com](http://www.holidayseniorliving.com)  
Mon. - Sun. 7:30am - 7:30pm

**BIRD HUNTING Tips**

**SAFETY FIRST:** Treat every firearm as if it's loaded and wear appropriate protective gear. Be aware of your surroundings and the location of fellow hunters. **GAME & REGULATIONS:** Know the species you're hunting, their habitats, behaviors, and migration patterns. Adhere to all local, state, and federal hunting regulations. **PRACTICE SHOOTING:** This will improve your accuracy and confidence. Work on different shooting positions, target tracking, and quick shots. **SCOUTING & HABITAT:** Scout potential hunting areas before the season to identify their habitats, feeding grounds, and roosting sites. **GEAR & TECHNIQUES:** Choose hunting gear specific to the species you're targeting. Practice hunting techniques, such as camouflage, concealment, calling and understand wind direction.

Remember that ethical hunting practices, respect for wildlife, and safety should always be paramount while participating in any hunting activity. Additionally, always make sure to follow local hunting guidelines and regulations to protect the environment and wildlife populations. **HAPPY HUNTING!**

**NELSON'S Oil & Gas, Inc.**  
PROPANE & FUEL OIL DELIVERY  
LP Gas • Fuel Oil • Diesel • Gasoline

1346 Galveston Ave. Hot Springs, SD 57747  
605-745-4189

109 2nd Street Edgemont, SD 57735  
605-662-7500

831 Mt. Rushmore Rd. Custer, SD 57730  
605-673-4371

23909 Hwy 385 Hill City, SD 57745  
605-574-4303

720 W Main Street Hermosa, SD 57744  
605-259-4544

[nelsonsoilandgas.com](http://nelsonsoilandgas.com)

With the Most Experience & Knowledge of Any Company in the Area.

**Your Hometown Home Improvement Store!**

- Plumbing
- Electrical
- Household
- Outdoor Grilling
- Camping Supplies
- Milwaukee Tools
- Valspar Paints
- DeWalt Tools
- Pet Supplies
- Key Cutting

**NEWELL HARDWARE & SUPPLY**  
320 Girard, Newell, SD • 605.456.2313  
YOU'RE MORE THAN A CUSTOMER. YOU'RE A NEIGHBOR.

Shop. Dine. Play. Stay. **LOCALLY** and help support businesses throughout your area.

**STOP IN & CHECK OUT OUR HUGE SELECTION OF IN-STOCK FLOORING.**

Thousands of square feet of Luxury Vinyl Plank

Thousands of yards of Carpet

**ARPET BUYERS OUTLET**  
4425 E. Colorado Blvd. | Spearfish, SD 57783  
605-644-1665

**State Museum & Visitor Center**  
... AT THE CENTER OF THE NATION

This is where your western adventure begins! Our picturesque complex includes a museum full of western, pioneer and natural history exhibits, plus hands-on activities for the kids: the historic Johnny Smeadling Cabin, and the magnificent granite Center of the Nation monument and Avenue of State flags. We're located in the little town where the west begins: Belle Fourche! Our Visitor Center includes maps and traveler information, too!

**FREE ADMISSION**  
Autumn-Winter hours: Tuesday-Saturday 9 to 5  
Summer hours: Monday-Saturday 9 to 5; Sunday 1 to 4  
415 Fifth Avenue, Belle Fourche S.D.  
[www.thestatemuseum.com](http://www.thestatemuseum.com) • 605-723-2010 or 605-723-1200

**BUGLIN' BULL RESTAURANT & SPORTS BAR**  
511 Mt. Rushmore Rd. • Custer SD 57730  
605-673-4477

Family friendly restaurant & sports bar. Outdoor seating on upper deck.

We offer a full menu with a wide variety of dishes!  
Delicious Burgers & Sandwiches • Steaks • Seafood • Soups & Salads

Catch your team in action in our sports bar, or enjoy a great meal in our restaurant featuring a full bar and an excellent selection of wines, microbrews & cocktails

GO TO [www.bellefourchelivestock.com](http://www.bellefourchelivestock.com) FOR OUR AUCTION SCHEDULE & SPECIAL SALE DATES

(605) 892-2655 (800) 894-8684

**Belle Fourche Livestock Market**

SERVING THE TRI-STATE AREA SINCE 1935

**RUSHMORE STEEL ROOFING**

Tired Of Re-Roofing Your House? Try a Steel Roof!

Call Vernon 605-277-8870

Do It Once, Do It Right!

CALL TODAY FOR YOUR FREE ESTIMATE

June 1 - August 11, 2024

**56th ANNUAL Red Cloud Indian ART SHOW**

[dakotabusservice.com](http://dakotabusservice.com)  
[mydakotatrailways.com](http://mydakotatrailways.com)

**Dakota Bus Service Inc.** is looking for both experienced and new drivers in the Spearfish, Rapid City and Gillette, WY areas. Dakota Bus Service Inc. will train new candidates that meet minimum hiring requirements.  
Contact 605-642-2353

Free LOCAL AREA Map WITH RECREATIONAL TRAILS  
Black Hills, SD

[LincolnMarketing](http://LincolnMarketing.com)

**CBH CO-OP**  
Always Running

**HOT STUFF PIZZA**

**CHAMPS Chicken**  
(Hot Stuff Pizza & Champs Chicken not available at all locations)

[cbhcoop.com](http://cbhcoop.com)

**Belle Fourche Travel Center**  
18765 US 85 Belle Fourche, SD  
605-723-9000

**Belle Fourche C-Store**  
2311 5th Ave Belle Fourche, SD  
605-892-2661

**Sturgis C-Store**  
2020 Main St Sturgis, SD  
605-720-0193

**Elkhorn Ridge Travel Center**  
6764 E Colorado Blvd Spearfish, SD  
605-717-6960

**HWY 83, SD/NE BORDER EXPERIENCE THE THRILL!**

**ROSEBUD CASINO**

BUFFET • BINGO • BLACK JACK • BAR  
DELI • RV PARK • ENTERTAINMENT

SD/NE State Line on Highway 83 • [www.rosebudcasino.com](http://www.rosebudcasino.com)  
Rosebud Casino (800) 786-7673 • Quality Inn (605) 378-3360